



GO DIGITAL

WORK SMARTER

and make more than
just a great impression



MAKE THE
SWITCH





Dentistry is evolving and practices are becoming more digitized, with scanners being incorporated at an exponential rate. Moving to digital with Align Technology's iTero Element® intraoral scanner offers you the opportunity to expand treatment options and deliver your patients better service from the moment a patient walks through your door – all in a reduced timescale. It makes both clinical and commercial sense.

How can iTero® move your practice forward?

- Controlled **PRECISION** to improve the comfort and fit of your dental appliances and restorations

By eliminating material and conditional error, in-chair adjustments are faster and less frequent

- Patient comfort and **ENGAGEMENT** in treatment planning

A happy patient makes for successful clinical outcomes, drives up referrals and encourages treatment uptake

- Practice **GROWTH** with easy-to-use and efficient technology

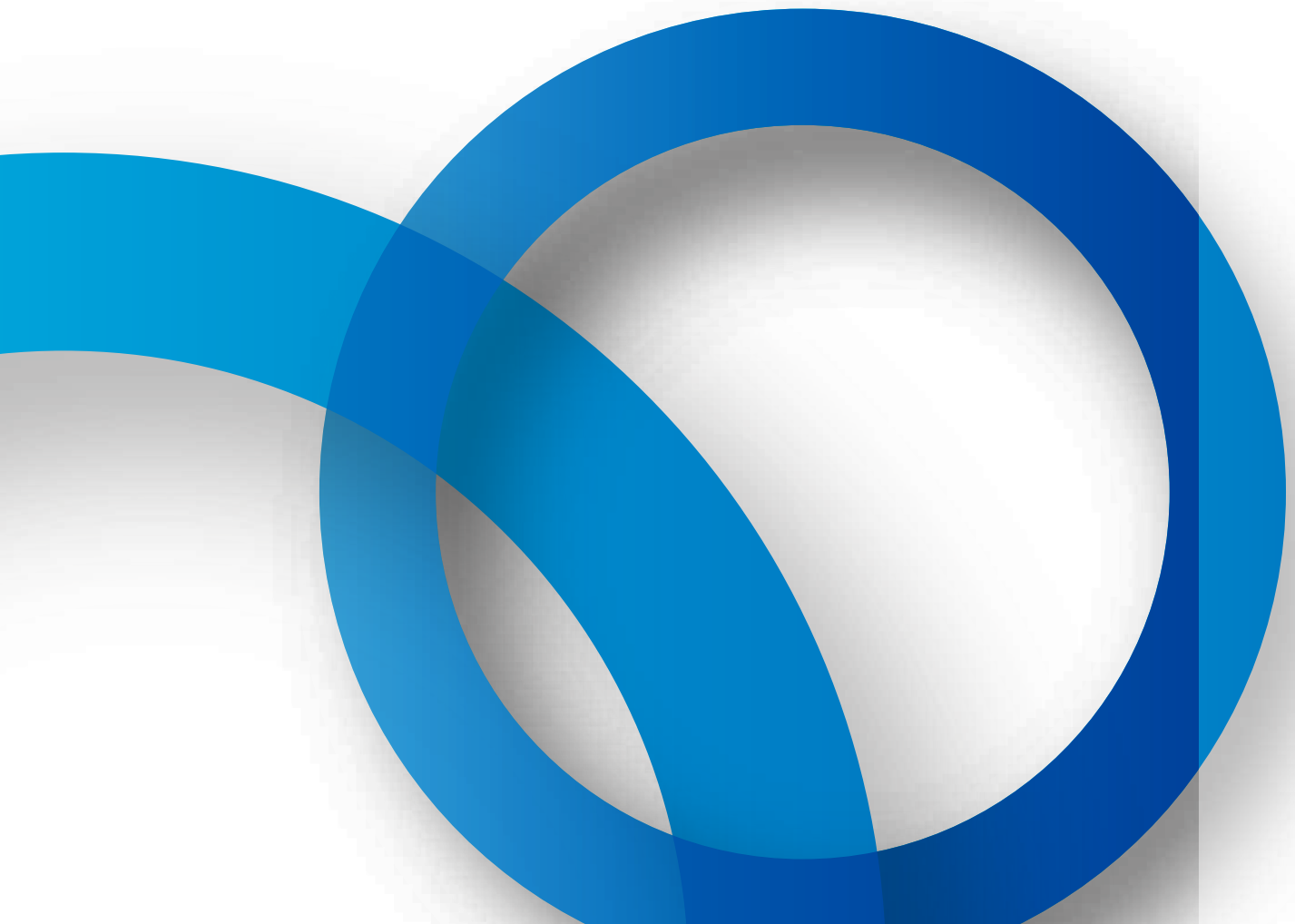
Integrate digital into your practice with ease and see the results in time, material, shipment and storage savings



SEE IT



A sound investment must always reap benefits, which is why an intraoral scanner needs to be so much more than just a replacement of the conventional system. Excellent visualization in real colour is key to clinical efficiency and patient engagement. Take a clear record every time and scan a full arch in a minute (or less¹).



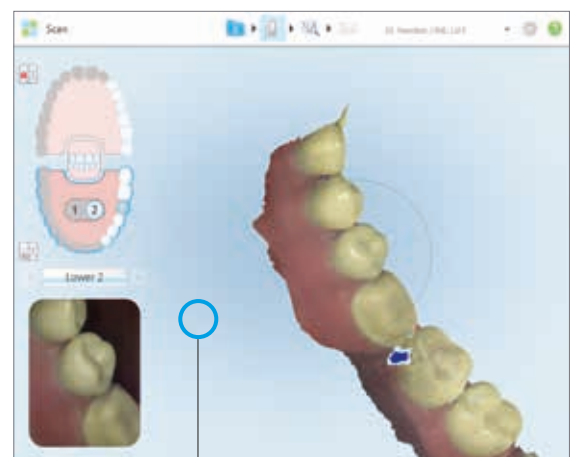


Scans are stored for simple referencing and accurate diagnosis. Track changes over time in hard and soft tissue easily, thanks to iTero **TIMELAPSE**.

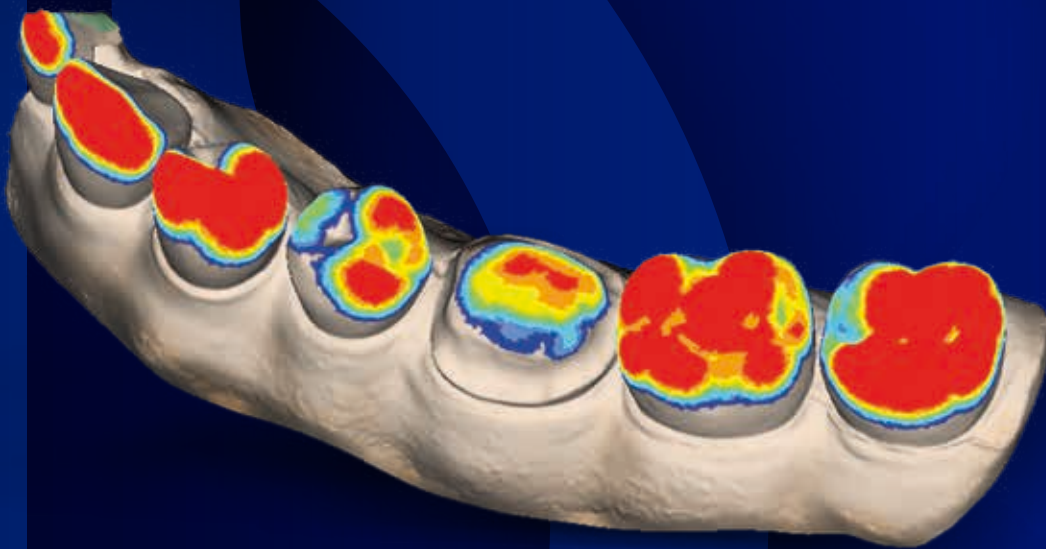
Visual access to the oral cavity is simplified with a patient-friendly, **ANGLED WAND** that reaches the most awkward areas.

The **VIEWFINDER** displays precisely what the camera sees, enhancing your visualization of the mouth, even posteriorly, with an enlarged and detailed image of the preparation and margin lines.

REAL-TIME feedback on missed scanned areas ensures high quality results with every appliance or restoration.



iTero Element slots seamlessly into your treatment planning process with its clinical tools and open digital solutions. It uses parallel confocal imaging technology with automatic soft tissue removal to ensure high quality STL files and maintain optimal scanning speed.



TREAT IT

Prosthetic cases that begin digitally are 40% less likely to need adjusting and any adaptations required are 63% faster to make.²

You can take a pre-treatment colour scan to capture gingiva and original tooth shape (if available), allowing a perfect match for restorations – in shape, size and colour.



Choose from a list of restorations directly from the scanner and simply enter the material and shading details – the selected teeth will be scanned in higher definition to ensure optimal fit.



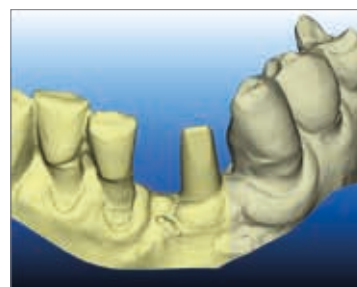
To avoid crowns with insufficient wall thickness – and resulting patient recalls or lab remakes – use the occlusal clearance tool to calculate the amount of occlusal tooth structure to be removed. If needed, use the eraser tool to ensure you only have to rescan the occlusal surface after modification.





The unique scanning sequence of iTero also allows for full-arch prosthetic restorations and palatal scans.

For the treated teeth, you can remove the retraction just before scanning to capture the tooth in highest definition and lock the scan, preventing any image interference from excess moisture, bleeding or gingiva collapse. The preparation-arch is scanned afterwards, so that iTero can accurately align the images with the most recognition points.



“With iTero Element you virtually have no limits in intraoral scanning!”

Dr. Baresel, Germany

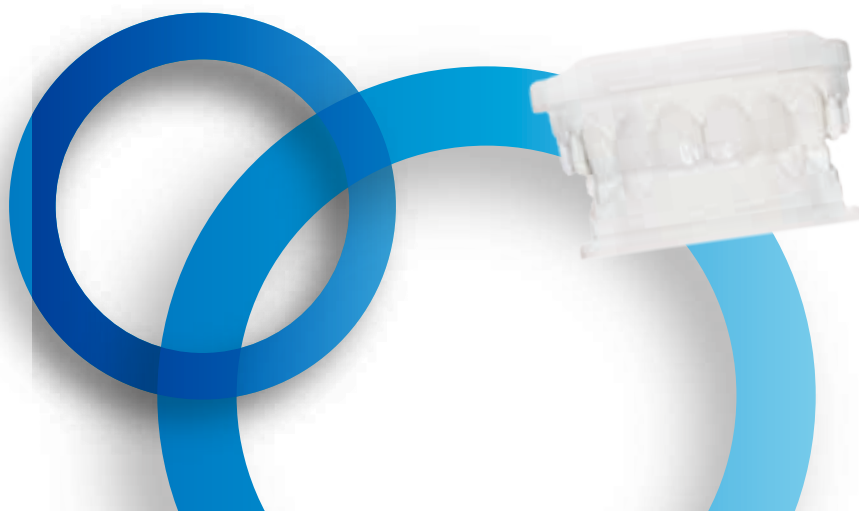
Technology designed to reduce treatment times and maximize your potential

With iTero modelling, our technicians clean the restorative scan files and set recommended margin lines within just a few hours, ensuring efficient laboratory submission and consistent outcomes.



Moisture removed and scan repaired as part of iTero modelling process.

Align Technology also has certified abutment workflows with Straumann, Dentsply Atlantis and ELOS NobelProcera, so you can scan the body of your choice to your lab and receive the custom abutment with final restoration for seating in just one appointment. We also offer same-day dentistry via our certified connectivity with the E4D Planmeca chairside milling system, or by importing our STL files directly into any open-source chairside milling CAD software.



SOLVE IT

Integrating the iTero Element intraoral scanner enables dentists to solve multidisciplinary treatment requirements by combining tooth alignment and restorative treatment. Research shows cosmetic dentistry can benefit up to 75%³ of patients, which is why more and more general dentists are expanding their offering with aesthetic treatments.



Align Technology's Invisalign Go clear aligner system is specifically designed for general dentists. Having treated over 4 million Invisalign® patients, we offer accuracy, reliability and predictability. By becoming an Invisalign Go provider, you can create a new revenue stream and future-proof your practice.

Exclusive: iTero Element scanner has fully integrated the Invisalign Go system



Case assessment

Convenient and simple to use. Engage patients in identifying their chief concerns chair side. Case Assessment will determine if a patient is suitable for treatment, giving you the confidence to proceed.

Outcome Simulator

Patients can visualize their Invisalign Go treatment with the Invisalign Outcome Simulator, which is designed to engage, inform and motivate.

Progress Assessment

Once this journey begins, the Progress Assessment Tool tracks if treatment is advancing as planned.

*Did you know, visual tools enhance
patient understanding?^{4,5}*

69%

of Invisalign outcome simulations
move to Invisalign treatment





Training and support as advanced as iTero Element itself

We have a virtual classroom populated by iTero clinical trainers to walk you through a seamless integration with limited downtime to your dental practice. Our integrated iTero technical support team can connect directly to your scanner via WebCam to answer your queries – and, should a replacement wand or base unit be required, we can ship overnight.⁶

Digital scanning time becomes shorter with practice⁷ and, by helping you discover how it can make the workflows in your practice even more efficient, Align Technology can ensure you join the dental digital revolution and boost the return on your investment.



Global presence. Local reach.

Align Technology is a global company committed to helping individual doctors and labs achieve success in practice by creating healthy, beautiful smiles for their patients. By driving innovation in digital dentistry, we help to modernize today's practices by replacing physical impressions, taking your treatment planning online, and creating the potential to enable and improve your clinical experience across almost every type of dental treatment offered.

For more information, please contact your local Align Technology representative, or visit www.iTero.com.



Align Technology BV
Arlandaweg 161
1043 HS Amsterdam
The Netherlands

Align Technology, Inc.
2560 Orchard Parkway
San Jose, California 95131
Align Technology BV
Arlandaweg 161, 1043 HS

